

viPlugin



User Manual v2.6.0

Copyright © by Michael Bartl, last updated 15.03.2012

Table of contents

Table of contents

Description.....	3
Installation.....	4
Installation via update site.....	4
Installation via zip file.....	7
Configuration.....	8
Preferences.....	8
Activating CTRL Shortcuts.....	8
Commands.....	9
Switch Mode Commands.....	9
Movement Commands.....	10
Delete Commands.....	12
Other Commands.....	13
Ex Commands.....	14
Preferences Commands.....	16
Credits.....	18

Description

viPlugin is a plugin for the Eclipse Platform that adds vi(m) functionality to almost all text based editors for Eclipse (JDT, CDT, PHP, ...). For developers this means all editors implementing the ITextEditor interface.

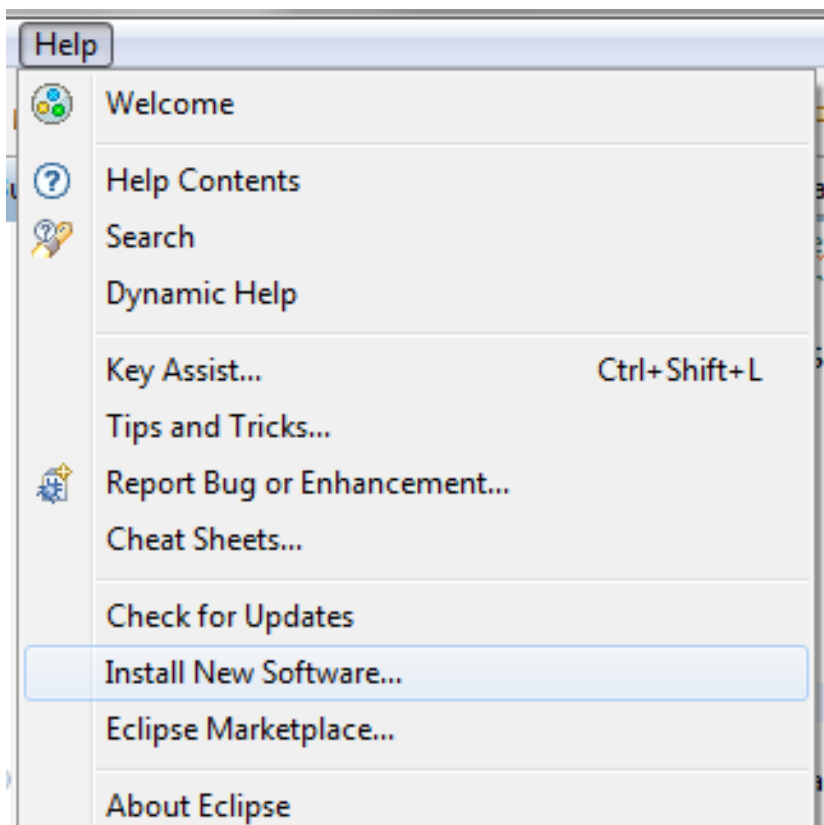
Supported are all products based on Eclipse ≥ 3.1 , including Eclipse itself, Rapid Application Developer, Zend Studio, Aptana and many more.

Installation

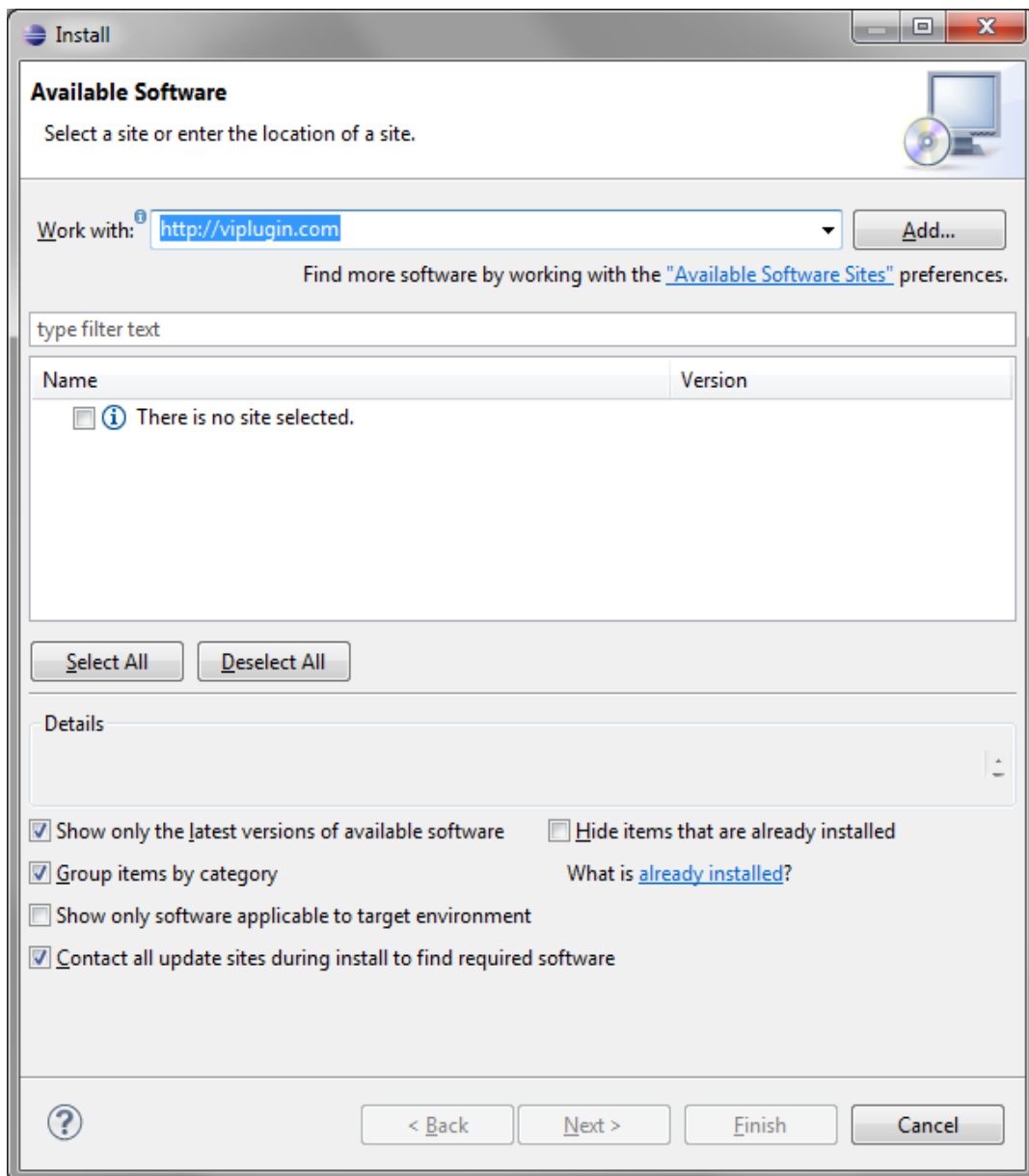
There are two ways to install the viPlugin.

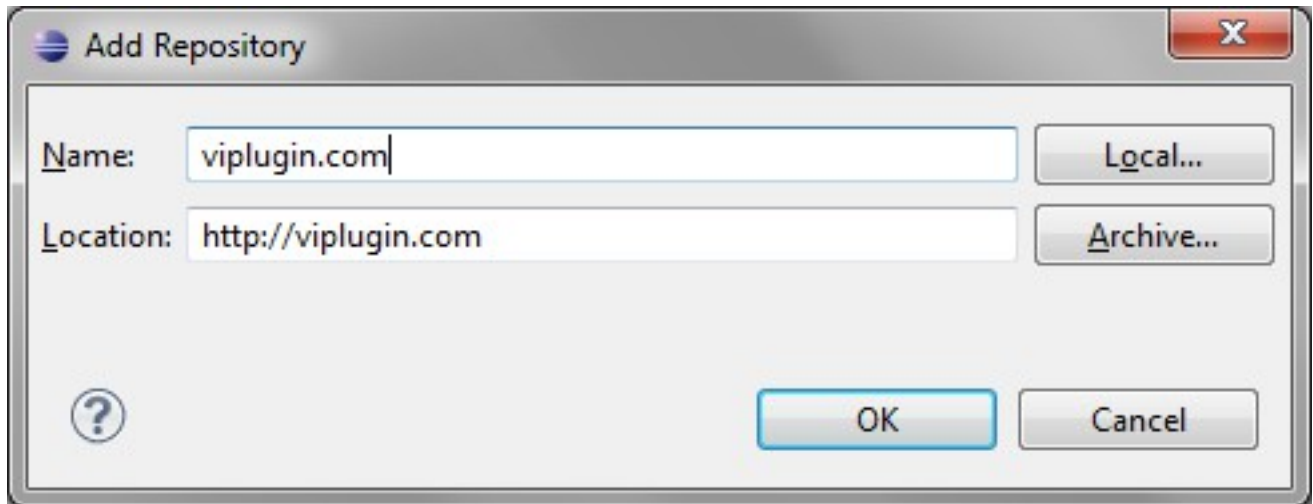
Installation via update site

Click Help → Install New Software...



Enter <http://viplugin.com> into the textfield and press Add...





Install the viPlugin and the Statusbar plugin.

Install

Available Software

Check the items that you wish to install.

Work with:

Find more software by working with the ["Available Software Sites"](#) preferences.

type filter text

Name	Version
Uncategorized	
viPlugin	2.5.1
viPlugin Statusbar	1.0.7

2 items selected

Details

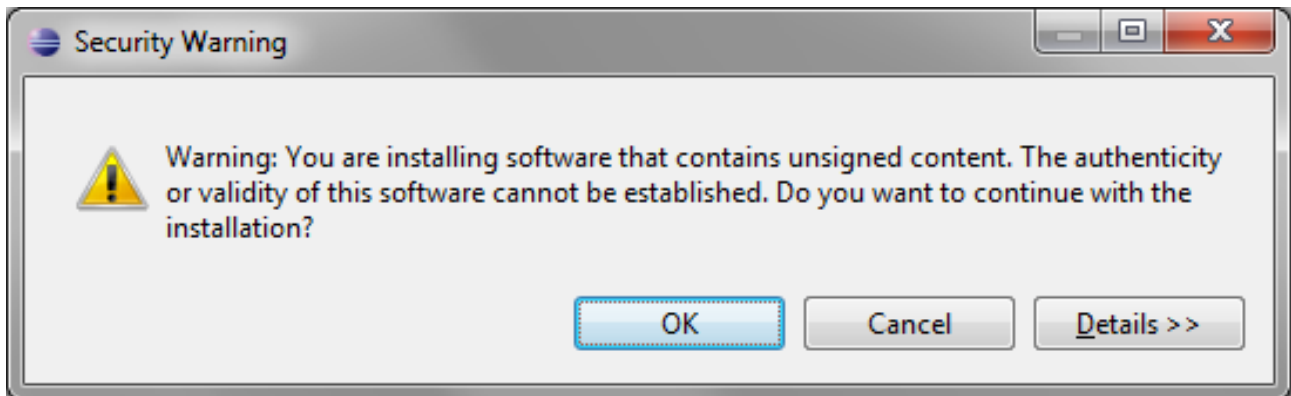
Show only the latest versions of available software Hide items that are already installed

Group items by category What is [already installed?](#)

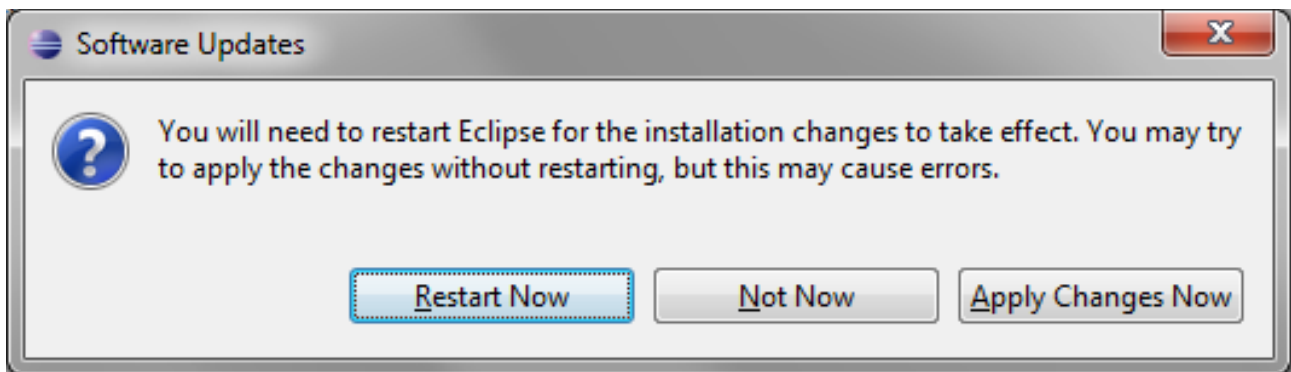
Show only software applicable to target environment

Contact all update sites during install to find required software

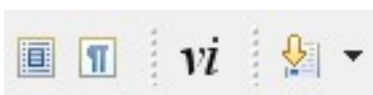
Press OK



Restart Eclipse



You should see this icon in the toolbar



By pressing the vi icon the viPlugin is loaded and all text editors will use it. By pressing the vi icon again it will be unloaded.

Installation via zip file

Download the latest version as zip file from the homepage viplugin.com (download box is on the right side). Extract the zip file to the dropins folder of your Eclipse installation. Restart Eclipse (if running)

Configuration

Preferences

The preferences for viPlugin are integrated into Eclipse and can also be accessed via `:set`

Activating CTRL Shortcuts

Window → Preferences → Workbench → Keys → Active configuration (drop-down) and select viPlugin.

Note: Some of the following command shortcuts are already in use by Eclipse itself and need to be reassigned yourself if needed. Also note that ambiguous keybindings do not work in Eclipse. e.g. CTRL+W for EraseBackOneWord would disable CTRL+W W, CTRL+W L, ...

viPlugin implements the following commands (Eclipse Actions) which can be assigned a keybinding via the standard preferences keys dialog:

- LoadViAction (default CTRL+ALT+V – loads/unloads viPlugin)
- SwitchToCommandMode (default CTRL+C, remove Eclipse standard CTRL+C binding to activate)
- SwitchToVisualBlockMode (default CTRL+V, remove Eclipse standard CTRL+V binding to activate)
- ScrollLineUpAction (default CTRL+Y)
- ScrollLineDownAction (default CTRL+E)
- CycleEditorsAction (default CTRL+W W)
- HalfPageUpAction (default CTRL+U)
- PageDownAction (default CTRL+F)
- PageUpAction (default CTRL+B)
- PasteBufferInInsertMode (no default binding)
- AddOneLevelOfIndentation (default CTRL+T)
- EraseOneLevelOfIndentation (default CTRL+D)
- EraseBackOneWord (no default binding)
- IncrementNumber (default CTRL+A, remove Eclipse standard CTRL+A CTRL+Y binding to activate)
- DecrementNumber (default CTRL+X)

Additionally the following standard Eclipse actions have been remapped:

- Redo (default CTRL+R, remove Eclipse standard CTRL+R binding to activate)
- Next Editor Tab (default CTRL+W L)

- Previous Editor Tab (default CTRL+W H)

Commands

Following is a short description of implemented commands.

Not all implemented commands are listed here.

Switch Mode Commands

Command	Description
ESC	Switch to command mode
i	switch to insert mode on current character
a	Switch to insert mode after current character
I	Switch to insert mode on first visible character of the current line
A	Switch to insert mode on last visible character of the current line
o	add a new line after the current line and switch to insert mode
O	add a new line before the current line and switch to insert mode
v	Switch to visual character mode
V	Switch to visual line mode
!	Switch to visual block mode
§	
CTRL+V (if mapped)	

Movement Commands

Command	Description
h j k l	movement keys
w	move one word forward
b	Move one word backward
W	Move one WORD forward
B	Move one WORD backward
e	Move to end of word
E	Move to end of WORD
gg	Go to the first line
G	Go to the last line
<n>G	Go to the <n>-th line
^	Move to first visible character in line
\$	move to the end of the line
0	move to the beginning of the line
(pipe)	
{	Go to next blank line
}	Go to previous blank line
%	Match brace
H	Go to first visible line
L	Go to last visible line

M	Go to center visible line
+	Go to the first visible character in the next line
-	Go to the first visible character in the previous line
_ (underscore)	Go to first visible character in line
<SPACE>	Move one character right (jump to next line if it was the last character in the line)
<ENTER>	Go to the first visible character in the next line

Delete Commands

Command	Description
x	delete current character
s	delete current character and switch to Insert Mode
dd	Delete current line
dk or d(Up Arrow)	delete current line and the line above
dj or d(Down Arrow)	delete current line and the line below
dw	Delete word
d\$	Delete to the end of the line
d0	Delete to the beginning of the line
cc or S	Delete current line and switch to insert mode
cw	Delete to the end of the word and switch to insert mode
c\$	Delete to the end of the line and switch to insert mode
c0	Delete to the beginning of the line and switch to insert mode

Other Commands

Command	Description
yy	yank (copy) current line
y	yank (copy) selected text to default buffer (clipboard)
"ay	yank (copy) selected text to buffer a
p	paste text in default buffer
"ap	paste text in buffer a
/abc	search for abc
*	search for word under cursor
#	search for word under cursor backwards
n	search again with the last search string
N	search backwards with the last search string
.	repeat last command
u	Undo last change
U CTRL-R (if mapped)	Redo last undo
<<	Shift line left
>>	Shift line right

Ex Commands

Ex commands support ranges e.g.

..,+1d

..,\$s/foo/bar/g

:1,'ac

Ex-Command	Description
:d	Delete current selection
:c	Delete current selection and switch to insert mode
:fs or :fullscreen	Maximize editor window
:version	Show viPlugin version information
:registers	Show content of registers
:vim	Execute external vim application with the currently opened file at the same line/column. The path to the vim executable has to be configured in the preferences.
:<	Shift current selection left
Shift current selection right	
:ta	Start Eclipse „Open Type“ Dialog
:y	Yank current selection
:e# or :b#	Switch to last editor
:t or :co (with range)	Copy range to specified destination
:map	Map command (easier via preferences)
:imap	Map insert mode command (easier via preferences)
:unmap	Unmap command or insert mode command (easier via preferences)

:m (with range)	Move range to specified destination
:w	Save file
:wq or :x	Save file and close editor
:wa	Save all
:e!	Revert changes
:q	Close editor without saving (but ask if there are unsaved changes)
:q!	Close editor without saving (and do not ask if there are unsaved changes)
:<nr>	go to line number <nr>
:u	Undo last change
:red	Redo
:new	Open new untitled text file
:n	Goto next editor
:N or :prev	Goto previous editor
:cn	Goto next Problem marker in current editor
:\$	Goto last line
:<Up-Arrow>	Go through Ex command history
:<Down-Arrow>	Go through Ex command history
:[%]s/foo/bar/[gic]	vi style search and replace
:%s or :s	Execute last search/replace command
:g/pattern/cmd	Execute cmd on all lines matching pattern. Support commands are d, y, t and m
:v/pattern/cmd	Execute cmd on all lines NOT matching pattern. Support commands

	are d, y, t and m
--	-------------------

Preferences Commands

:set	Open viPlugin preferences
:set ignorecase :set ic	Ignore case in search (and replace)
:set noignorecase :set noic	Do not ignore case in search (and replace)
:set vimcursor :set vc	Use VIM style cursor
:set novimcursor :set novc	Do not use VIM style cursor
:set shiftwidth=3 :set sw=3	Set shiftwidth to 3
:set expandtab :set et	Expand tabs to spaces
:set noexpandtab :set noet	Do not expand tab to spaces
:set wrapscan :set ws	Wrap searches
:set nowrapscan :set nows	Do not wrap searches
:set hlsearch	Highlight search results

:set nohlsearch	Do not highlight search results
:set incsearch	Use incremental search
:set noincsearch	Do not use incremental search
:set copytclipboard	Copies the default buffer yanks to the system clipboard
:set nocopytclipboard	Deactivate copytclipboard
:set undolevels=99	Sets the number of undo levels to 99

Credits

This product includes the following software:

Jakarta Commons

Jakarta Codec

The license can be found in the doc folder.